

PowerTrain Library

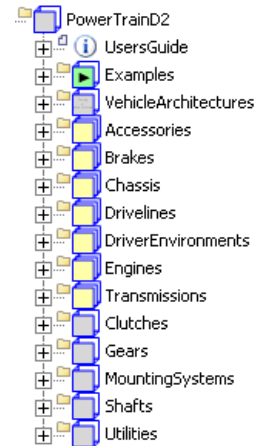
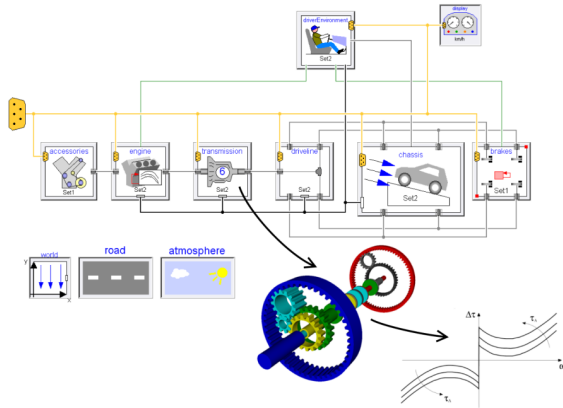
Vehicle Power Trains and Planetary Gearboxes with Losses

PowerTrain

Modelica
Library

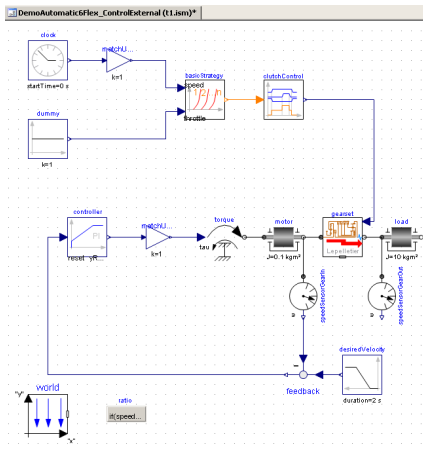
developed by DLR
distributed by BAUSCH-GALL GmbH

The PowerTrain Library provides primarily one-dimensional rotational mechanical components for vehicle power trains. Optionally, all three-dimensional mechanical effects can be taken into account, e.g. when mounting a power train on a multi-body vehicle dynamics model.

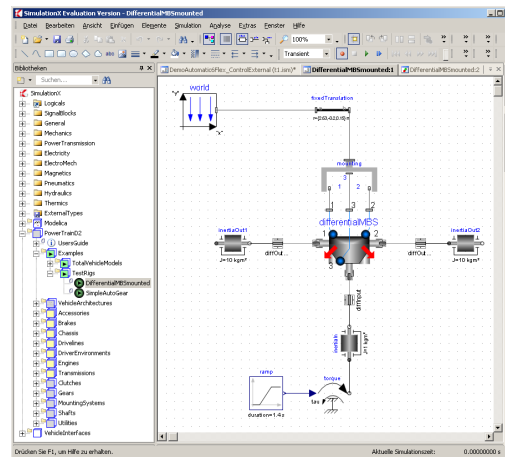


In addition, basic components for modeling the longitudinal dynamics of a whole car are available. The focus however is on power train modeling with emphasis on standard and planetary gears with losses and flexible driveline models.

Examples in SimulationX



Automatic transmission



Differential

Development

DLR, German Aerospace Center, Institute of Robotics and Mechatronics, Oberpfaffenhofen, Germany (www.dlr.de/rm/en)



Availability

The PowerTrain Library will be soon available for SimulationX. Dymola users please contact your Dassault Systèmes Value Added Resellers. Dymola users in D, A, CH please contact our partner company CENIT.